

JOB PLACEMENT PROGRAMME

- Up to 70% of salary support!

For more information and to apply, please visit
<https://e2i.com.sg/jpp>



For enquiries, please write to us at:
<https://e2i.com.sg/biz>



Employment and Employability Institute
80 Jurong East St 21 Singapore 609607
www.e2i.com.sg

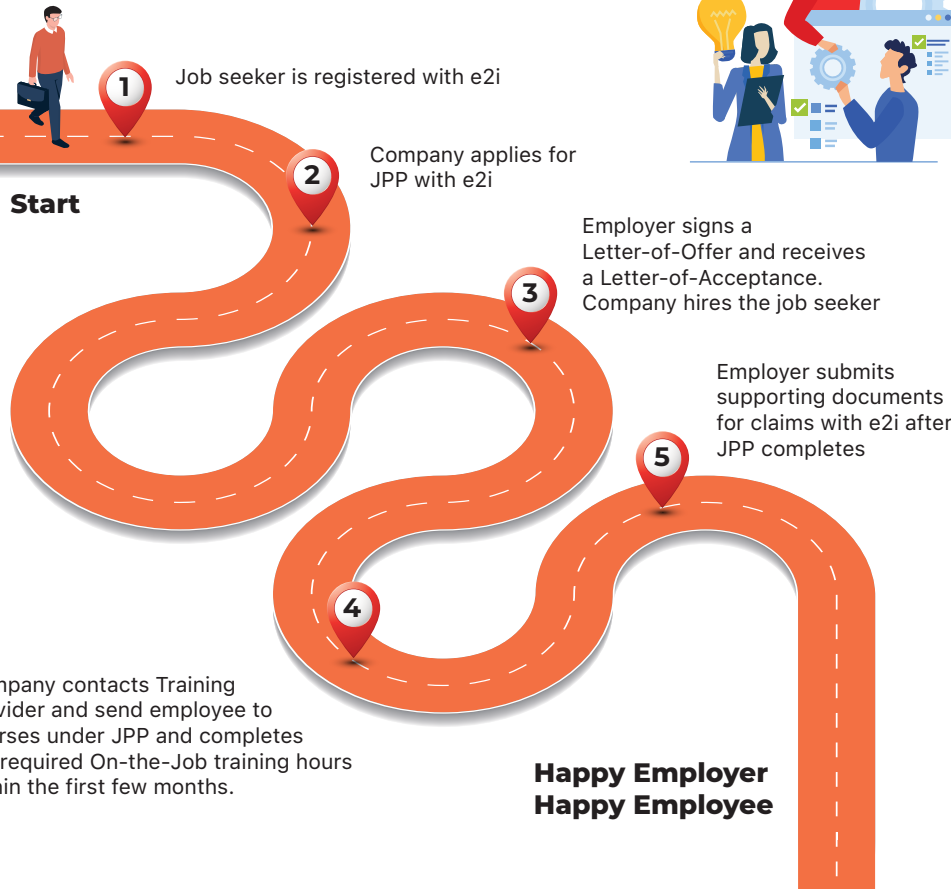


• What is JPP?

The Job Placement Programme (JPP) provides salary support for Singaporean job-seekers registered with e2i to take on new jobs and undergo training. You can share with your hiring employer this programme and encourage them to hire you.

• Eligibility

- Singapore Citizen or Singapore PR
- Offered a permanent contract at market rate or basic salary of \$1,200, **whichever is higher**
- At least 21 years old and above
- Graduated or completed National Service, for at least 2 years, whichever is later
- The hiring position should not fall under SSOC 1 – 3
- Company should apply JPP directly with e2i and not be applied via third party external representative to manage this grant on their behalf.



• Salary Support for new hire (Technical Roles)

| Singaporean | | SPR |
|--|--|--|
| < 6 months unemployed | ≥ 6 months unemployed | |
| Salary support of up to 70% monthly salary, capped at \$2,000 per month per employee for up to 6 months . Overall cap per eligible employee at \$12,000 per programme. | Salary support of up to 90% monthly salary, capped at \$3,000 per month per employee for up to 6 months . Overall cap per eligible employee at \$12,000 per programme. | Salary support of up to 70% monthly salary, capped at \$2,000 per month per employee for up to 6 months . Overall cap per eligible employee at \$12,000 per programme. |

* Technical Roles, Salary Support would be up to 3 months with an overall capped of \$6,000 per eligible employee

• Salary Support for new hire WITH JGI (Technical Roles)

| Singaporean | | SPR |
|---|---|---|
| < 6 months unemployed | ≥ 6 months unemployed | |
| Salary support of up to 35% monthly salary, capped at \$1,000 per month per employee for up to 12 months . Overall cap per eligible employee at \$12,000 per programme. | Salary support of up to 45% monthly salary, capped at \$1,500 per month per employee for up to 12 months . Overall cap per eligible employee at \$12,000 per programme. | Salary support of up to 35% monthly salary, capped at \$1,000 per month per employee for up to 12 months . Overall cap per eligible employee at \$12,000 per programme. |

Retention of workers – Retention period should be same duration with Training period

* The Salary support of up to 12 months is inclusive of the retention period)

* For Non-Technical Roles, Salary Support would be up to 6 months with an overall capped of \$6,000 per eligible employee

• What is Jobs Growth Incentive (JGI)?

Jobs Growth Incentive (JGI) supports employers to expand local hiring from September 2020 to September 2021 (inclusive), so as to create good and long-term jobs for locals (SC & SPR). For more information on JGI, please visit IRAS website.

• What Training is required to qualify for JPP?

Write in to us at <https://e2i.com.sg/biz> to find out more.

